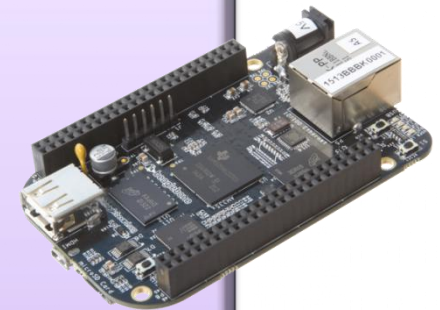


EICASLAB™ DEMO



*The Professional Software Suite
for Automatic Control Design and Forecasting*

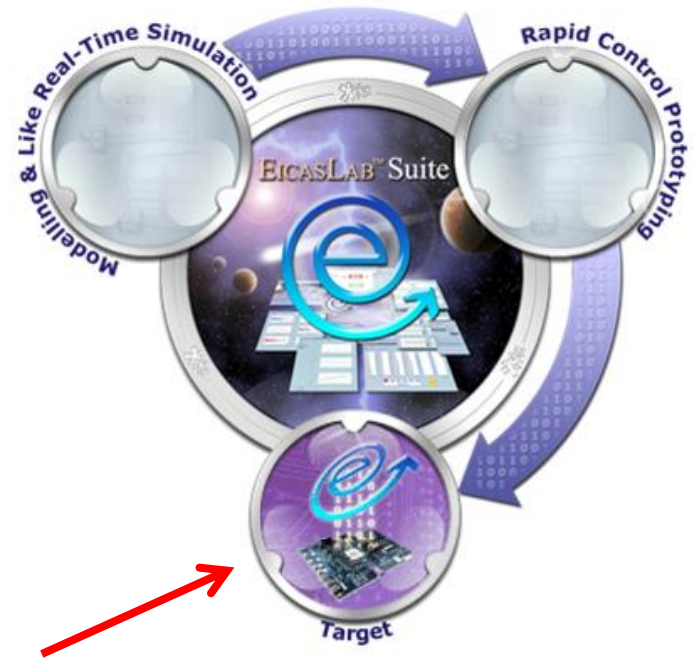
EICASLAB Demo RT-emb
Beagle Bone at work!



Part 6: TARGET
Final Validation Test

Target

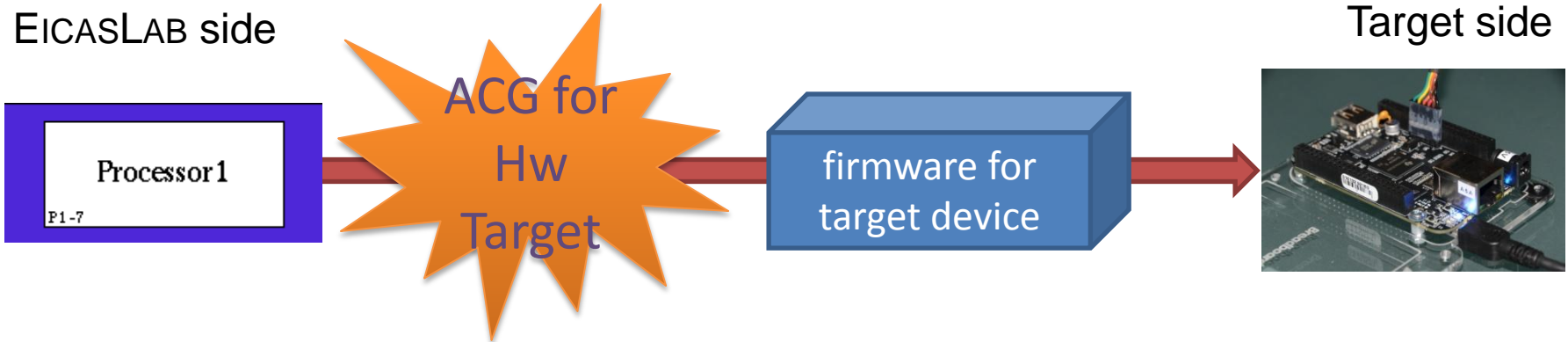
The **Target operative mode** allows to export the control algorithm to the **final hardware target** that will execute it to control first the simulated plant in **Hardware-in-the-loop** and then the real plant in **Final Validation Test** sub-modes.



Target

EICASLAB provides the routines to generate the *Basic Software*, not only for the EICASLAB RCP Platform itself, but also for a family of devices or for a specific hardware architecture.

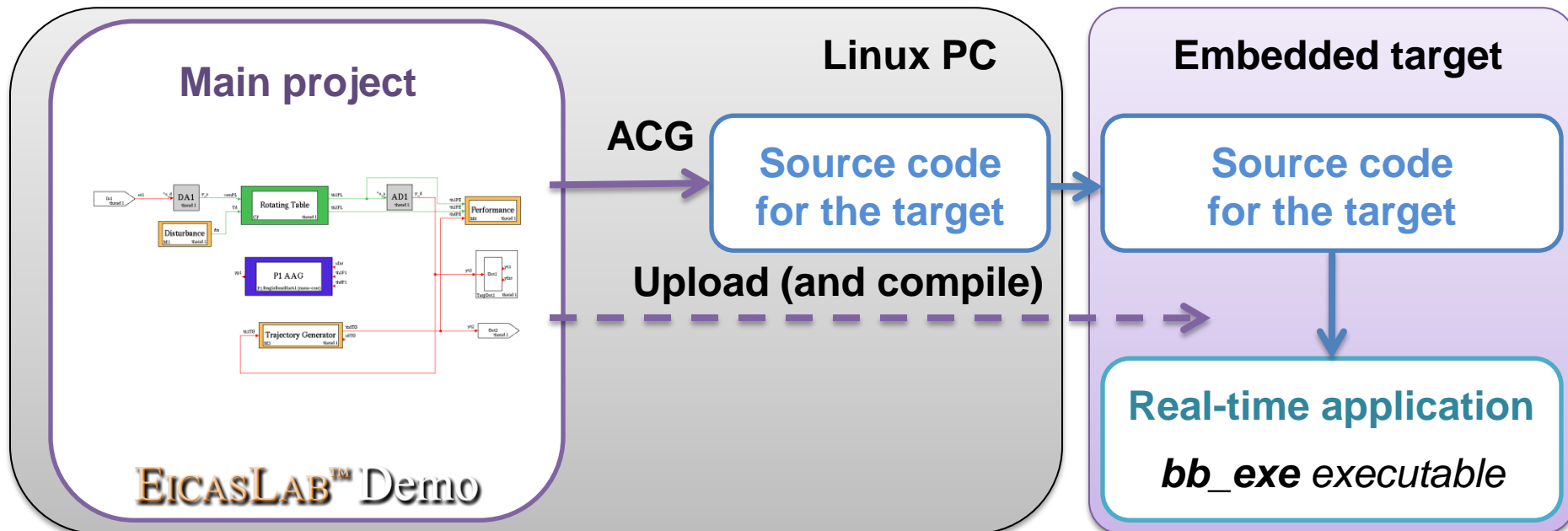
ACG means *Automatic Code Generation*



Target

The EICASLAB Target Module for Beagle Bone enables

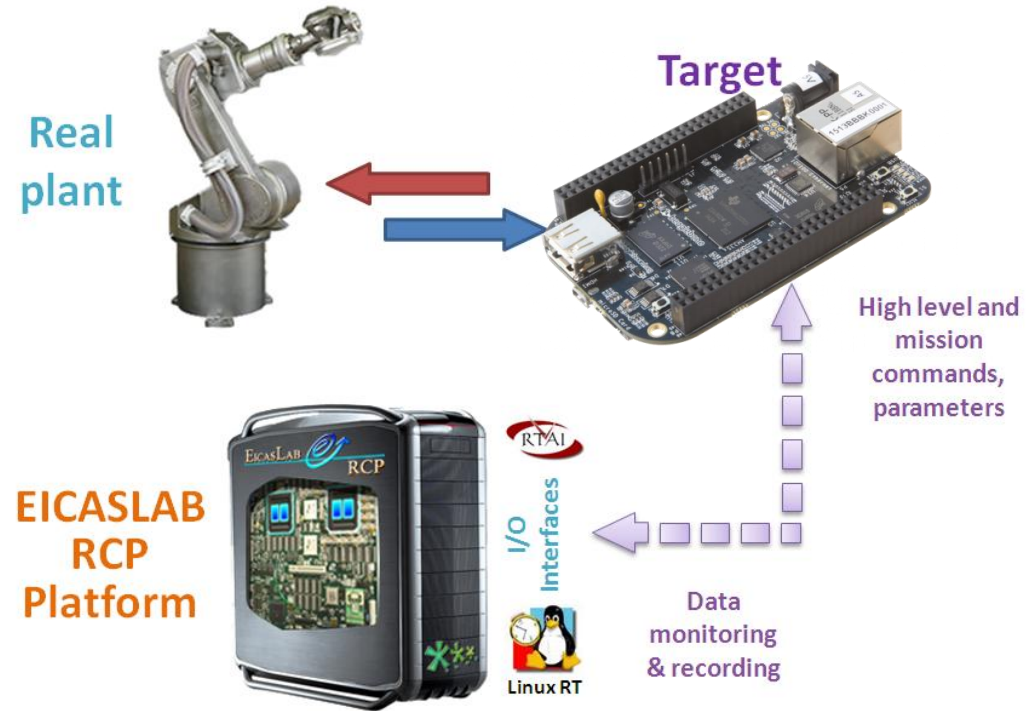
- The code generation for the Beagle Bone target
- The upload and compiling process



Final Validation Test

The **Final Validation Test operative sub-mode** allows to test the control algorithm **execution on the target hardware** controlling the **real plant**.

Final Validation Test scenario

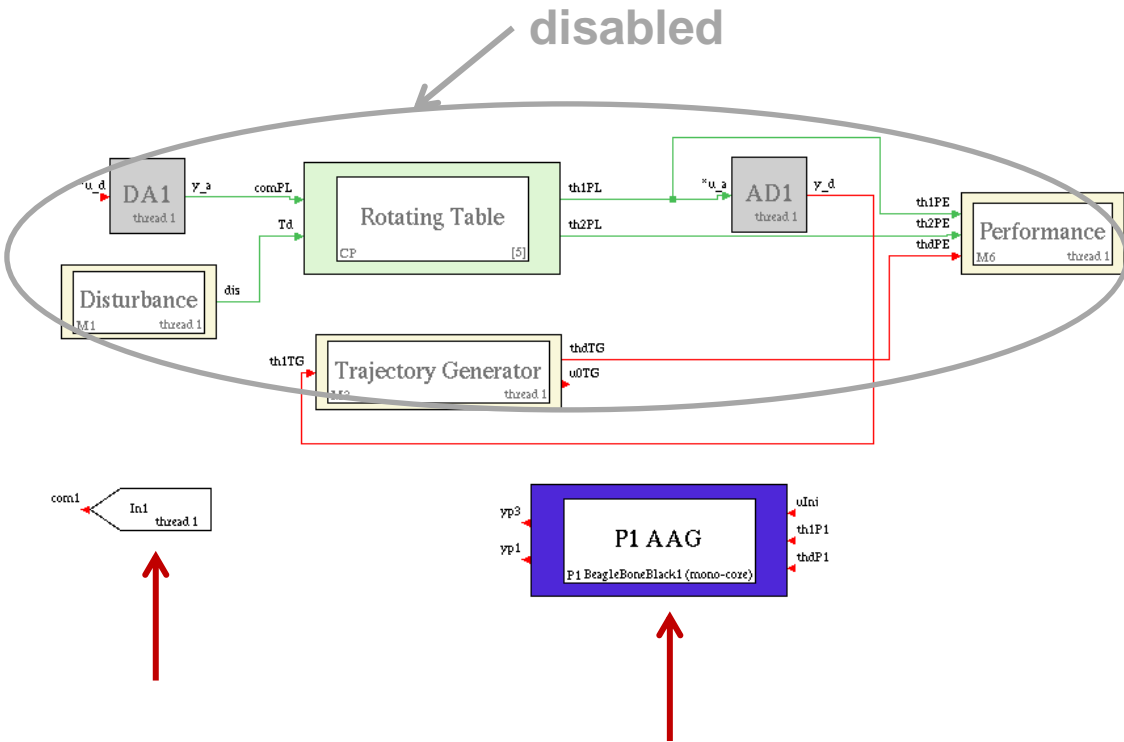


The EICASLAB RCP platform can be suitably connected to the target to run as host PC that works as monitoring system.

Final Validation Test

The **system layout** in this mode:

The system layout shows that the *Plant Area* is disabled again, because during the FVT trials the **real plant** is simulated using a separate project.



The control algorithm is executed by external **hardware target**, as in HIL trials.

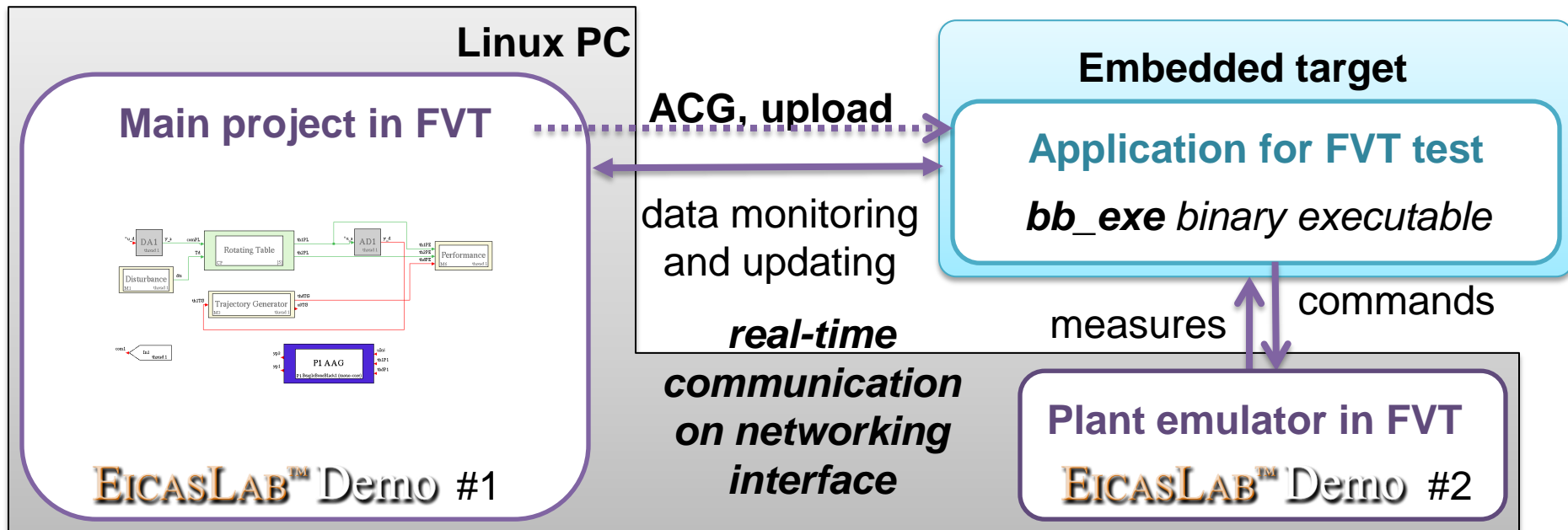
Final Validation Test

Who does what in Final Validation Test operative sub-mode in RT-emb demo:

HW	EICASLAB RCP Platform	Embedded board target	Rotating Table emulator
SW	monitoring supervisor	runs control logic	simulated by second project

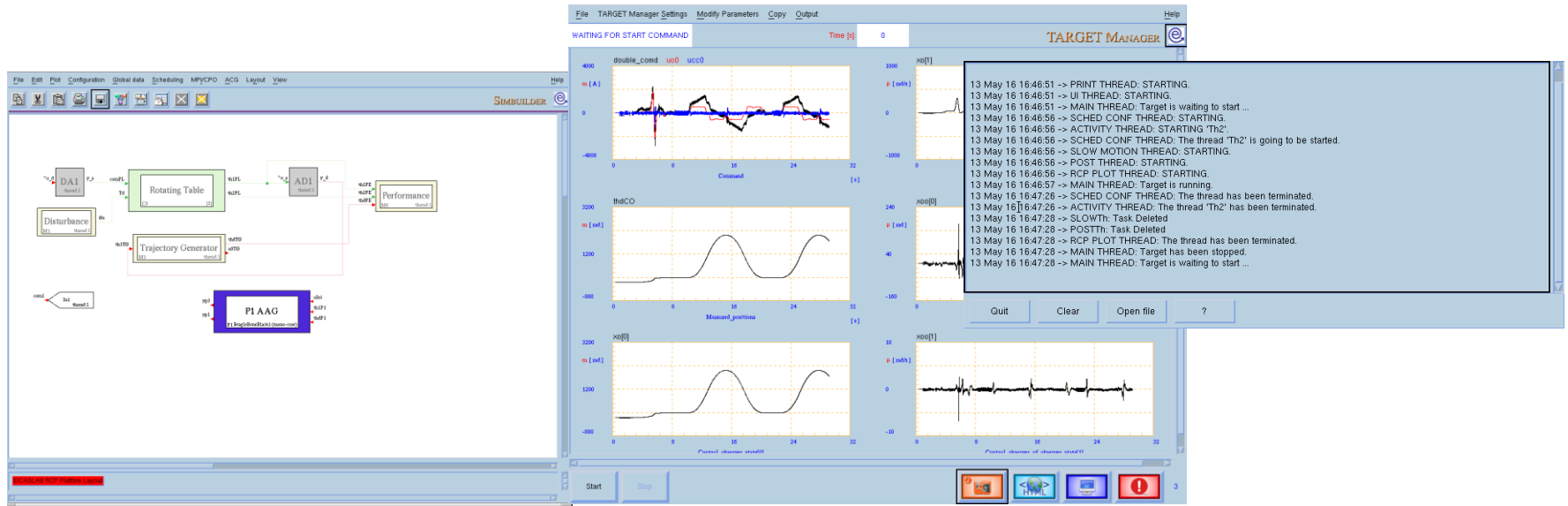
Final Validation Test

When the demo is in HIL operative sub-mode the "**ACG for FVT**" advanced feature generates the AS + BS for performing the Final Validation Test.



Final Validation Test

The **TARGET Manager** manages the overall Final Validation Test trial.



Final Validation Test

TARGET Manager

Run-time parameters
plot and data
recording



EICASLAB RCP Platform

Monitoring data
on Eth-UDP

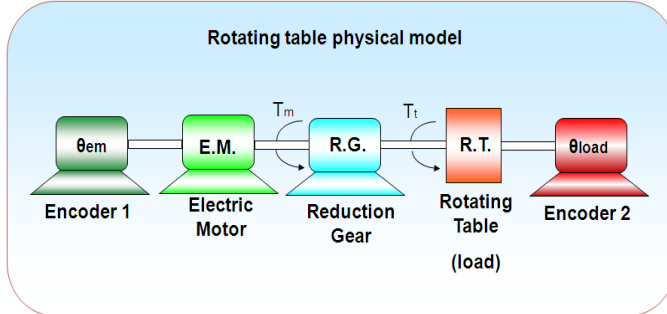


Run-time parameters
on Eth-UDP

Embedded target

Motor command
on Eth-UDP

Real plant



Trajectory measure
on Eth-UDP

EICASLAB™ Demo RT-emb

The demo installer is downloadable from EICASLAB website (www.eicaslab.com)



For more info,
please contact:
support@eicaslab.com

